

# isolcork®

## Spray Cork

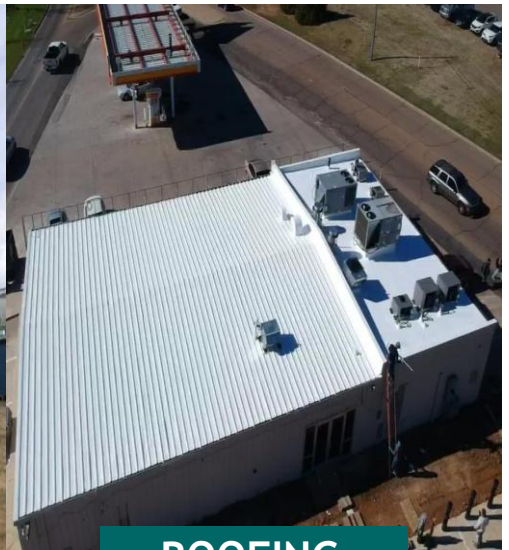
Thermal coating, based on selected cork particles, ensures thermal comfort and contributes to energy savings.



**INSIDE**



**EXTERIOR**



**ROOFING**

Spray Cork comes to combine the need for protection in perfect harmony with nature, being formulated with 100% natural cork. Its spraying allows us to form a continuous, thermal, breathable, durable and elastic membrane for exposed or indoor areas, which will completely protect the surface improving its thermal behavior and contributing to energy savings.



Renovate and protect buildings



Excellent adhesion



Prevents overheating of the building



Good fire performance



Contribution to thermal insulation



Breathable



Reduces condensation dripping



Energy savings

isolcork®



Instituto Nacional de Normalización



**CITECUBB**  
CENTRO DE INVESTIGACIÓN EN  
TECNOLOGÍA DE LA CONSTRUCCIÓN  
UNIVERSIDAD DEL BÍO-BÍO



[www.isolcork.com](http://www.isolcork.com)

# isolcork®

## USES

Colored finish coating for interior or exterior use, with high thermal insulation, sound-absorbent and breathable. It can be used on facades and roofs, either in new construction or rehabilitation of these. It has an excellent adhesion capacity on different types of surfaces such as metals, concrete, masonry, bricks, plasterboard, fiber-cement and wood (its direct use on OSB boards is not recommended).

## FEATURES AND BENEFITS

- ✓ Easy and fast application
- ✓ Breathable
- ✓ Thermal
- ✓ Elastic
- ✓ Flexible
- ✓ High and low temperature resistant
- ✓ High weather, UV and sea salt resistance
- ✓ Solvent and VOC free product
- ✓ Product with natural raw materials

## SPECIFICATIONS

Finishing

Textured

Color

Colored folder

Performance

75 - 86 ft² | 7 - 8 m² (2 layers)

Thickness

0,12 in | 3 mm



PRESENTATION

PACKAGES OF

**26 lb**  
**12 kg**

NOTE: The performance is theoretical, the porosity of the substrate and the undulation of the substrate must be considered, no waste is contemplated. It is recommended to verify that the final thickness is a minimum of 0,12 in (3 mm), otherwise apply an additional layer.

## APPLICATION INFORMATION

Ambient temperature	: +41°F min / 95°F max   +5°C min / +35°C max
Relative air humidity	: 5% min / 80%max
Support temperatura	: Between +41°F min / +149°F max   Between +5°C min / +65° C max Beware of condensation. During application the surface temperature must be at least +37.4°F (+3° C) above the dew point.
Humidity of the substrate	: < 4 % moisture content.
Mixing life	: Spray Cork is designed for fast drying under favorable conditions. The material will dry quickly (forming a surface layer) at high temperatures. Therefore, once the product has been prepared, it should be kept in the shade and the container should be kept clean for prompt application.

## DRYING TIME

Before the application of a second coat of Spray Cork should be allowed:

Temperature

Time

< + 10°c

24 hours

+ 10°c

14 hours

+ 20°c

7 hours

+ 30°c

4 hours

NOTE: Consider drying time with sunlight.

The substrate must be completely hardened and have sufficient strength. The surface must be perfectly level, completely clean, dry, free of oil, grease, crumbly and inconsistent parts or other materials that may affect the adhesion of the product. In cases where the surface is completely crumbly, scarify it completely until a good support is obtained and restore the lesions or degraded parts with a suitable mortar. In case of hydro-cleaning, wait for the substrate to dry completely.

## SUPPORT PREPARATION

### Concrete

In case of new concrete, it must be sufficiently aged. In the presence of cracks, holes or irregular areas, restore them with suitable cement plaster.

### Old mortars

Make sure that the mortar is consistent and with good adhesion to the substrate, otherwise predict partial or total removal and reconstruction of the mortar.

### Wood

Thoroughly clean the surface by removing dust, crumbling pieces and flakes. The wood should be completely waterproofed, dry, well cohesive and dimensionally stable.

### Metal

Clean the surface very well, removing all dirt and any traces of rust that may exist.

NOTE : In the case of painted substrates, given the wide variety of paints available on the market, it is recommended that an adhesion test be performed to verify the suitability of the application or the need to use the fixative.

## PREPARATION OF THE MIXTURE

Prior to application, mix Spray Cork for a minimum of 3 minutes or until a homogeneous mixture is achieved, then incorporate component 2 and dye, then mix for 3 more minutes. Spray Cork should be mixed mechanically using an electric mixer (300-400 rpm).

## EQUIPO DE APLICACIÓN

It is applied mechanically by using a texture spraying machine. The application must be in two crossed coats and deliver at least 0,12 in (3 mm). Use nozzle N° 6



## APPLICATION

1. Wait for the complete drying of the primer eventually applied if necessary.
2. Apply an abundant first coat of Spray Cork. In case of rain on not perfectly dry product, check carefully the suitability for the following coating.
3. After complete drying of the first coat, apply a second coat of product, trying to reach the recommended thickness. For a better result and a more homogeneous coating it is recommended to cross coat.



## CLEANING

The tools used can be washed with water immediately after use. Once the product has dried completely, it is recommended to clean the tools with Use neutral products, not too aggressive. Choose the most suitable cleaning method (sponge, brush or hydro-cleaning) according to the type of dirt present.

## STORAGE

The product should be stored in original containers perfectly closed, in well ventilated environments, protected from sunlight, water and frost, at temperatures between +41°F (+5°C) and +77°F (+25°C). Storing the product at higher temperatures reduces the shelf life of the product. storage 12 months.










## SECURITY

During handling, use personal protective equipment and follow the instructions in the safety data sheet of the product.

## RECOMMENDATIONS

- ✓ Do not apply at ambient and substrate temperatures below +41°F (+5°C) or above +95°F (+35°C).
- ✓ During the summer, apply the product in the coolest hours of the day, protected from sunlight.
- ✓ not apply if there is imminent danger of rain or ice, in conditions of heavy fog or relative humidity above 80%.
- ✓ Apply the product on completely dry surfaces.
- ✓ The product is not suitable for flat roofs. Possible water stagnation may cause localized discolorations.
- ✓ Before applying the product, it is recommended to cover thresholds, frames and any element that should not be coated.
- ✓ Keep unused product in its original and well sealed container.

## TECHNICAL DATA

ESSAYS	RESULTS	REGULATIONS
Water vapor transmisión test	36.8 (g/m²/24hr)   5.29 (U.S. Perms)	ASTM E96 / E96M-22 
Pull-out resistance	Metal/Stell 52.0 PSI   Stucco 9.2 PSI	ASTM D4541 - 17 
Surface Burning Characteristics of Building Materials	Class 'A'	ASTM E84-21 
Fungus resistance	No fungal growths observed	ASTM G21-15 
Thermal conductivity	0.050 ± 0.002 (W/m*k)	EN 12664:2001-1 
Water vapor transmission properties	Permanence W 1,525E-09 (kg/m² S Pa) Resistivity $r_v$ 3,39 (MN s/g m) Resistance Rv 0,008 (MN s/g) Permeability $\delta$ 3,507E-12 (Kg/m s Pa) Water vapor resistance factor $\mu$ 0,626	NCh 2457 of 2014 
Thermal conductivity	0.041 (W/m*k)	NCh 850 of 2008 
Adhesion by direct traction method	Zinc 0,36 (Mpa) / Fiber cement 0,33 (Mpa)	NCh 2471 of 2000 
Sound absorption coefficient	Sound reflective 0.13 < $\alpha$ < 0.32 Range 400 Hz to 2000 Hz.	ISO 10354-2 

## CONTACT US

### LATAM

**CHILE**  
Phone: +56 2 3231 5719  
+56 9 9749 4753  
Email: info@isolcork.cl

**COLOMBIA**  
Phone: +57 314 201 7335  
Email: colombia@isolcork.com

**ECUADOR**  
Phone: +59 3 9899 26036  
Email: ecuador@isolcork.com

### CENTRAL AMERICA AND CARIBBEAN

**CAYMAN ISLANDS**  
Phone: +1 345 946 3626  
Email: info@foampros.ky

### NORTH AMERICA

**TEXAS - UNITED STATES**  
Phone: + 1 832 606 - 5837  
Email: texas@isolcork.com

**ARIZONA - UNITED STATES**  
Phone: +1 520 867-5400  
Email: texas@isolcork.com

**MÉXICO**  
Phone: +52 662 327 0808  
Email: contacto@fortgreens.com

### EUROPE

**BELGIUM**  
Phone: + 1 832 606 - 5837  
Email: texas@isolcork.com



Scan me for more information!